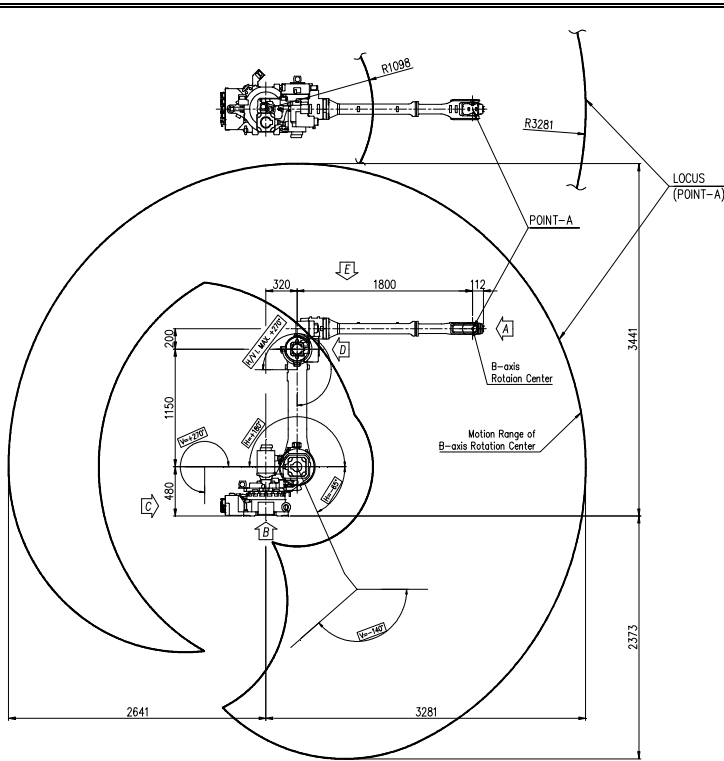


# HH020L

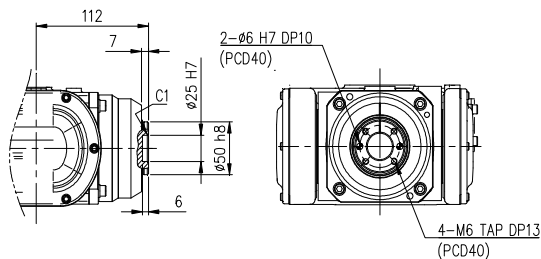
**Payload 20Kgf**

Installation method		Application	
Floor	●	Spot welding	
Ceiling		Arc welding	
Wall surface		Handling	●
		Assembly	
		Sealing	●
		Painting	

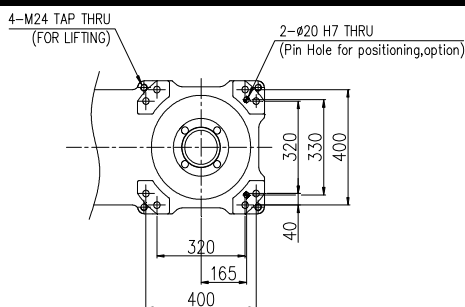


Item		Specification	
Robot model		HH020L	
Payload		20 Kg	
Structure		Articulated	
Degree of freedom		6 axes	
Max. working envelope	Arm	S Swivel	±3.141 rad (±180°)
		H Horizontal	+3.141 ~ -1.134rad (+180° ~ -65°)
		V Vertical	+3.141 ~ -1.396rad (+180° ~ -80°)
	Wrist	R2 Rotation 2	±3.403 rad (±195°)
		B Bending	±2.356 rad (±135°)
Max. working speed	Arm	S Swivel	3.054 rad / s (175° / s)
		H Horizontal	3.054 rad / s (175° / s)
		V Vertical	3.141 rad / s (180° / s)
	Wrist	R2 Rotation 2	6.283 rad / s (360° / s)
		B Bending	6.632 rad / s (380° / s)
Wrist torque	R2 Rotation 2	39.2 Nm (4 Kgfm)	
	B Bending	39.2 Nm (4 Kgfm)	
	R1 Rotation 1	19.6 Nm (2 Kgfm)	
Accuracy of position repeatability		±0.08 mm	
Ambient Temperature		0 ~ 45 °C (273 ~ 318 K)	
Robot's Weight		535 Kg	

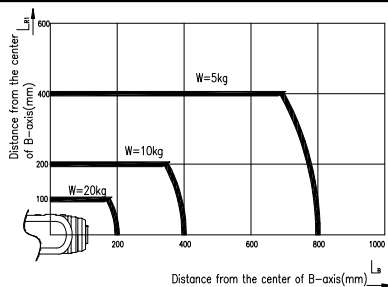
**View A: Detailed drawing of the wrist attachment part**



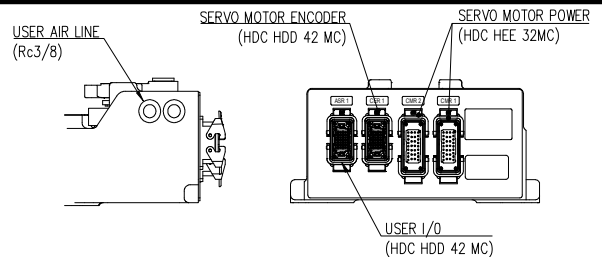
**View B: Dimensional drawing for the floor installation of the body**



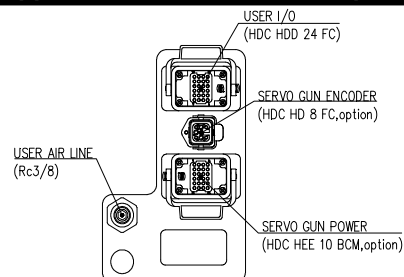
**Wrist-axis torque line diagram**



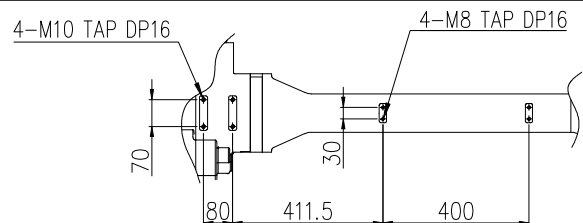
**View C: Application cable connection part (Option)**



**View D: Application cable connection part (Option)**



**View E: Details of the application ancillary part attachment**



\*\* For product improvement, some of the ratings, specifications, dimensions, etc. are subject to changes without notice.