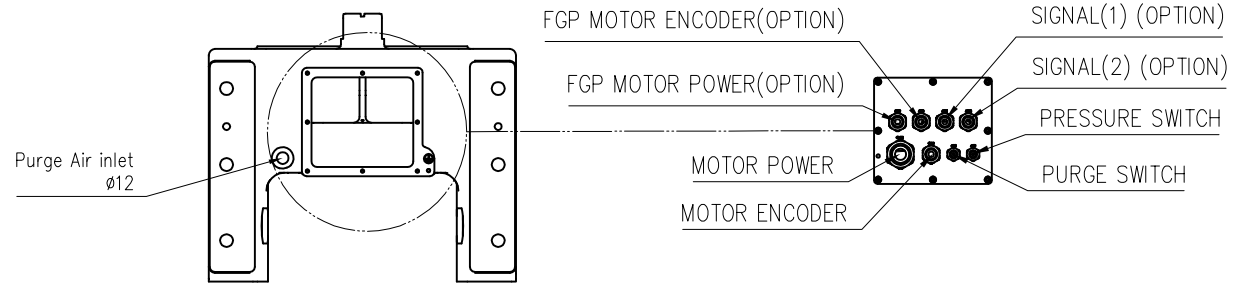
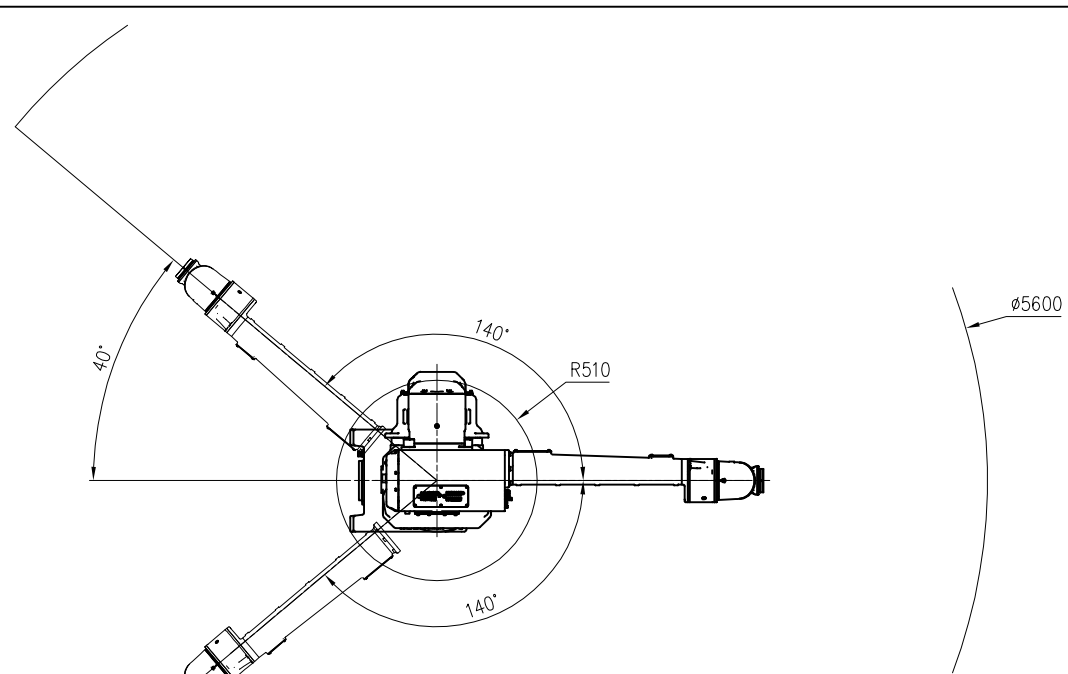
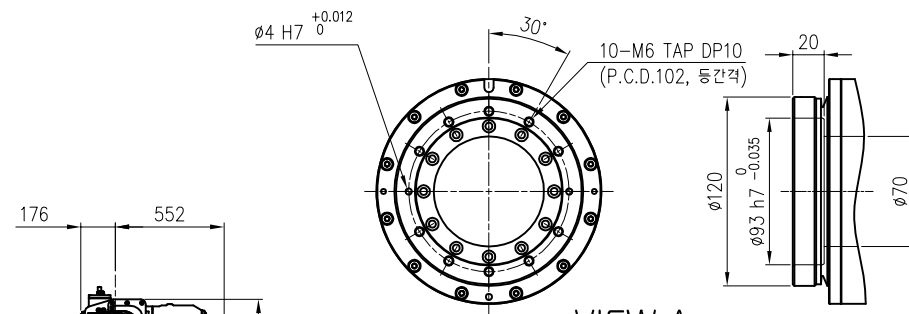
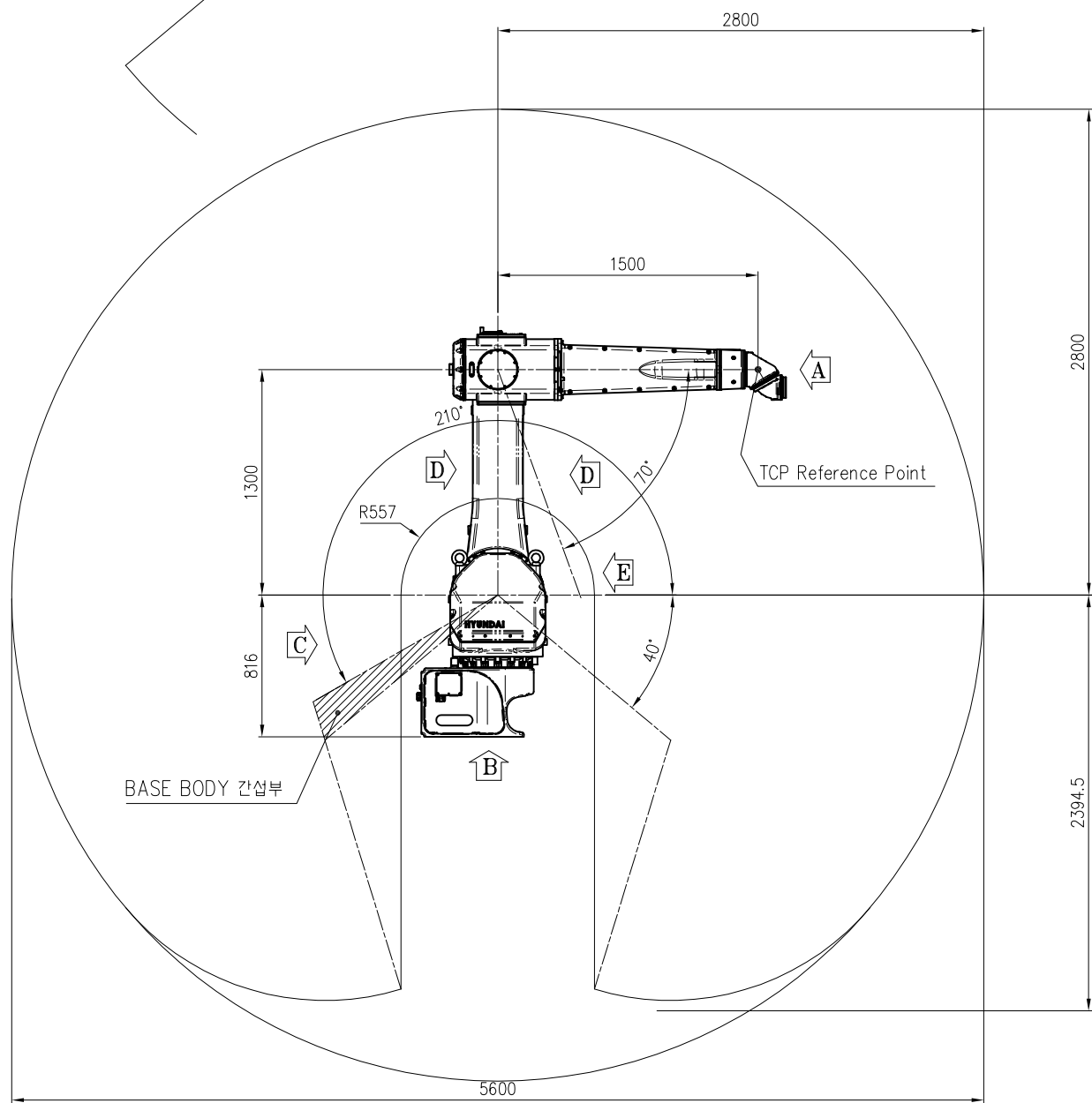


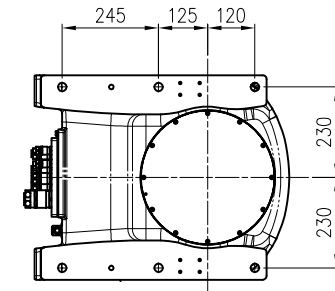
Item	Model	YP015-28
Installation		Floor
Degree of Freedom		6
Repeatability		±0.2mm
Painting Speed		1500mm/s
Robot Weight		580 kg
Motion Range & Speed	S-Axis	±160°, 100°/s
	H-Axis	±280°, 100°/s
	V-Axis	±330°, 100°/s
	R2-Axis	±720°, 450°/s
	B-Axis	±720°, 540°/s
	R1-Axis	±720°, 600°/s
Payload	Wrist	15kg
	Outer arm	15kg
	Inner arm	15kg
Ambient Conditions	Temperature	0 ~ 45°C
	Humidity	20 ~ 85%RH (non-condensing)
Hazardous location certification (인증 중)		ATEX CE II 2 G c Ex ib px IIB T4 Ta=0°C to +45°C



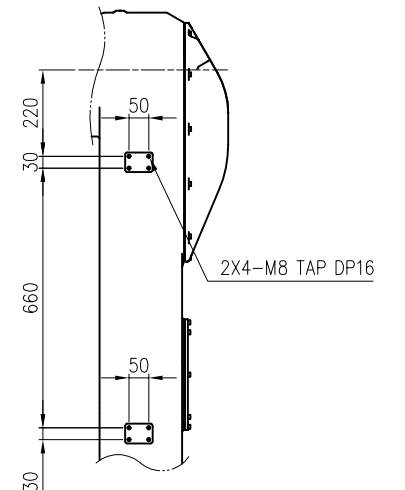
VIEW C
(SCALE 3/1)



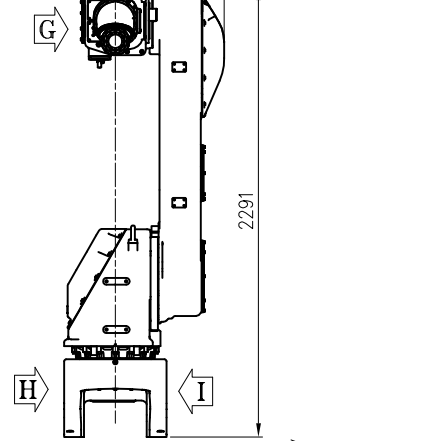
VIEW A
(SCALE 8/1)



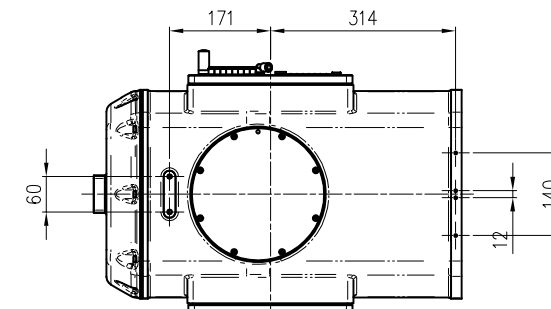
VIEW B
(SCALE 2/1)



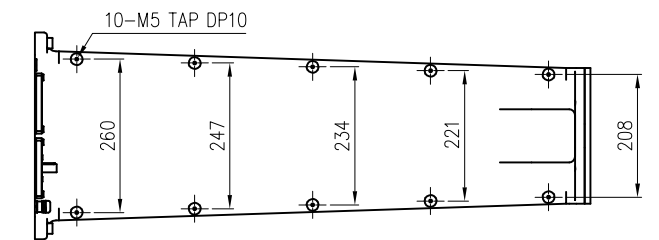
VIEW D
(SCALE 2/1)



VIEW E
(SCALE 3/1)
(배면대칭 동일)



VIEW F
(SCALE 3/1)



VIEW G
(SCALE 3/1)



TECHNICAL SPECIFICATION SUBJECT TO CHANGE WITHOUT NOTICE

MODEL	YP015A-28	issue.0
DATE	2020.11.17	