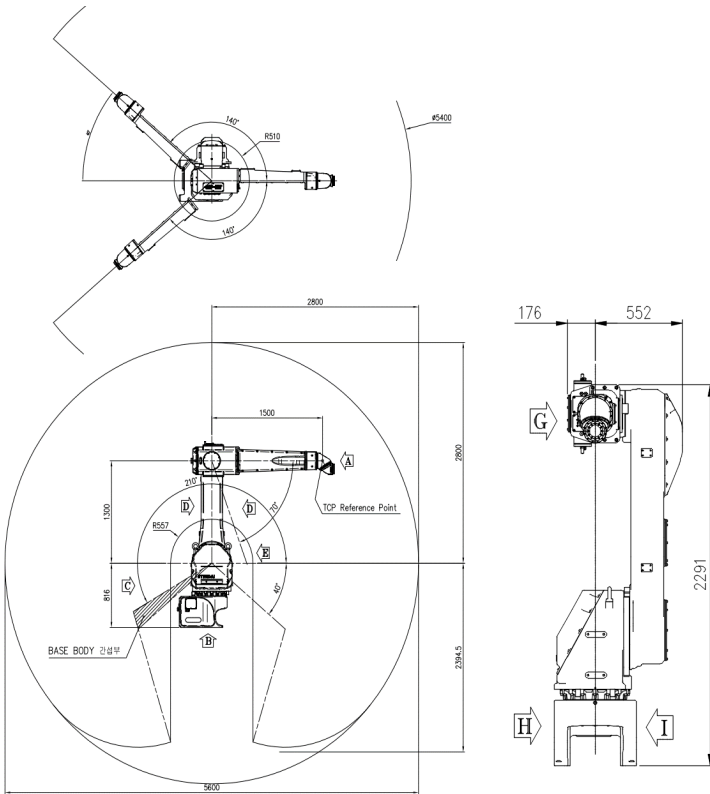
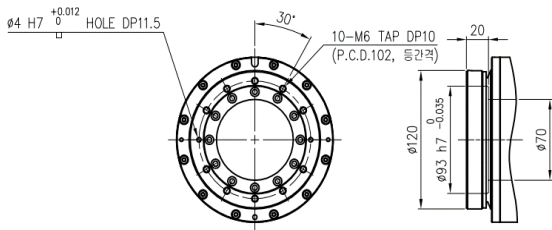


YP015A-28

Installation		Application	
Floor	●	Spot Welding	
Ceiling		Arc Welding	
Wall		Handling	
		Assembly	
		Sealing	
		Painting	●

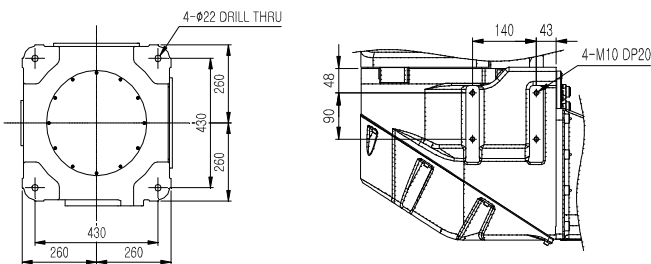


VIEW A Wrist Flange pec.

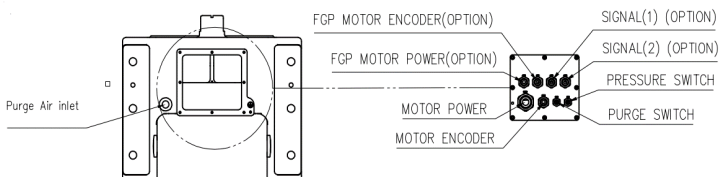


VIEW B Body Installation

VIEW F Bolt Spec. for App.



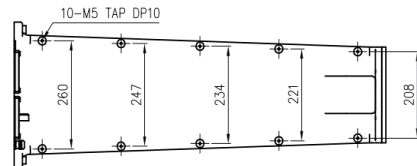
VIEW C Application Cable



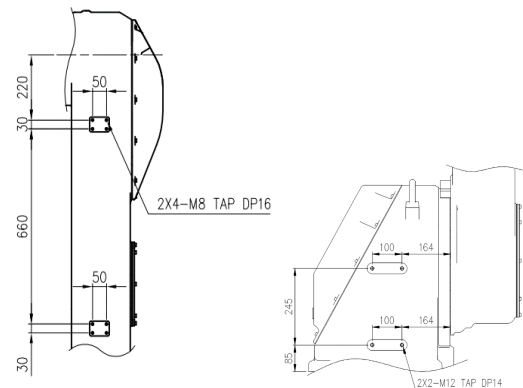
Items	Specification	
Model	YP015-28	
Payload	Wrist	15 Kg
	Outer arm	15 Kg
	Inner arm	15 Kg
Structure	Articulated	
Degree of Freedom	6 Axes	
STROKE	Main	S $\pm 2.443 \text{ rad } (\pm 140^\circ)$
		H $-0.873 \sim +4.014 \text{ rad } (-40^\circ \sim +210^\circ)$
		V $-1.222 \sim +4.537 \text{ rad } (-70^\circ \sim +90^\circ)$
Wrist		R2 $\pm 6.283 \text{ rad } (\pm 360^\circ)$
		B $\pm 6.283 \text{ rad } (\pm 360^\circ)$
		R1 $\pm 6.283 \text{ rad } (\pm 360^\circ)$
SPEED	Main	S 2.793 rad / s (160° / s)
		H 2.793 rad / s (160° / s)
		V 2.793 rad / s (160° / s)
Wrist		R2 7.854 rad / s (450° / s)
		B 9.425 rad / s (540° / s)
		R1 10.472 rad / s (600° / s)
Repeatability	$\pm 0.2 \text{ mm}$	
Ambient Condition	Temp.	0 ~ 40 °C (273 ~ 313 K)
	Humid.	20~85%RH (non-condensing)
Weight	600 kg	
Certificate No.	IECEX DEK 20.0016 (DEKRA 20ATEX0028)	
Explosion Proof	Ex Code	Ex Ib [Ib] pxb IIB T4 Gb ⊕ II 2 G Ex ib [Ib] pxb IIB T4 Gb
	Ex Ib	Intrinsic Safety (Zone 1)
	pxb	Pressurised
	IIB	Gas Group : Ethylene
	T4	Maximum Surface Temp. of Equipment : 135 °C
	Gb	Zone 1

* Wall Installation : S-Axis speed 1.745rad / s (100° / s)

VIEW E Bolt Spec. for App.Cable



VIEW D Bolt Spec. for App.Cable



** Technical specification subject to change without notice